

Art of Precision & Performance

Vcenter-P76 (APC) P106 / P136

Vertical machining center

- Rapid feeds 48/48/32 m/min (Vc-P76/P106)
- 12000rpm spindle output 18.5 KW(s3)
- BBT-40 / 30 tools
- Roller guideways
- Bottom guarding flush (Vc-P106/P136)
- Screw chip removers



Vcenter-P series High Performance VMC

- X-travel 760/1060/1360 mm for Vc-P76/P106/P136
- High rapid feed 48 m/min (32 m/min for P136)
- High speed 12000rpm spindle
- Electrical counterbalance



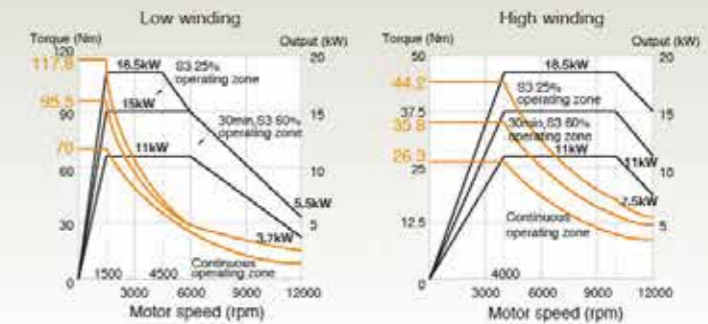
Spindle BBT-40

18.5 kW* (S3-25%)

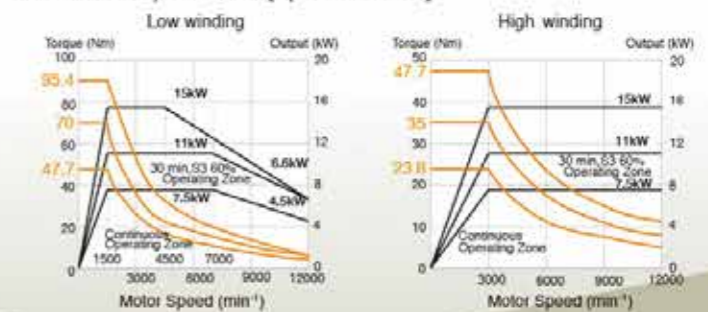
12000rpm
[* opt. 15 kW with CTS]



Fanuc α /12/12000 (std. without CTS)



Fanuc α /T8/12000 (opt. with CTS)



ATC

- 2.2 (6.0) sec. (P76)
- 2.3 (6.3) sec. (P106)
- 2.3 (7.7) sec. (P136)
- T-T (chip-chip)

30

Tools

Magazine

Feeds & Travels

48/48/32 (P76/P106)

32/32/32 (P136)

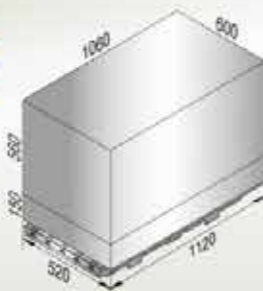
X/Y/Z (m/min)

760 / 500 / 510 (P76)

1060 / 600 / 560 (P106)

1360 / 700 / 700 (P136)

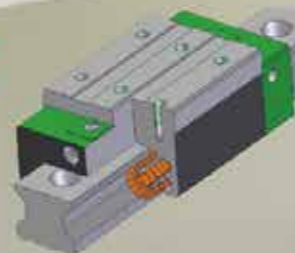
X/Y/Z (mm)



e.g. Vc-P106

Table & Guideways

- 500 kg (P76)
- 600 kg (P106)
- 1000 kg (P136)



Roller guides X/Y/Z (mm)

30 / 35 / 45 (P76)

35 / 45 / 45 (P106)

45 / 35 (4 off) / 45 (P136)

840 x 500 mm (P76)

1120 x 520 mm (P106)

1400 x 700 mm (P136)

Structure



Certificated Casting

GA350



Wide column

1166 mm (P76)
1270 mm (P106/P136)

Vcenter-P series

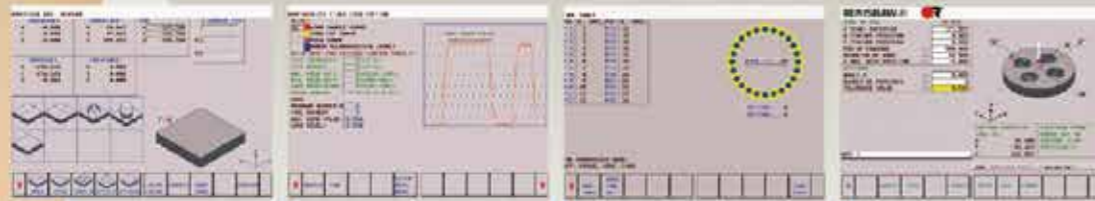


Standard Accessories

New Fanuc Oi-MF Plus (type-1) control includes:

- 10.4" screen
- AICC-2 (200 blocks)
- QWERTY keyboard
- 2GB CF card (incl.)
- Manual Guide i (MGI)
- VSS Macros (Victor's GUI)

Victor Taichung's GUI "VSS macros"



Smart workpiece measurement

Adaptive cutting at constant loading

Tool management

Renishaw® GUI

Spindle oil cooler



Arm type ATC + Auto door for magazine + Coolant ring + LED lights



Heat exchanger + Enclosed rear guarding



Bottom guarding flush (Vc-P106/P136) + screw chip remover (4 screws for P136)



15" screen (opt.)

Linear scales



Optional Accessories

CTS (Coolants Thru. Spindle)



Auto tool length measurement



Auto part measuring



4th axis interface for rotary table



Chip conveyor



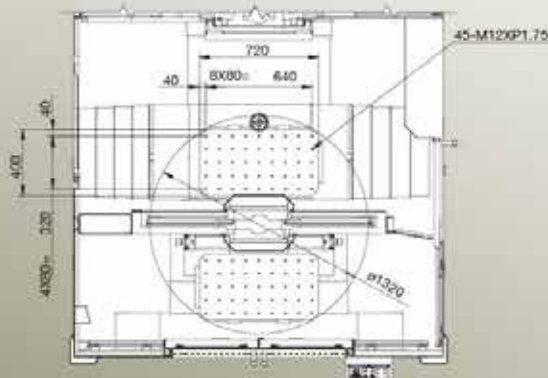
Vcenter-P76APC

Auto Pallet Changer

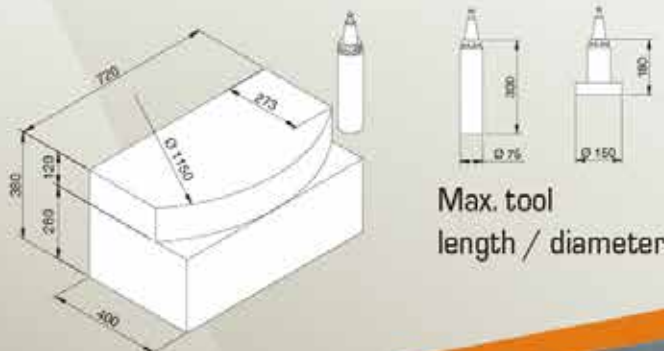
- APC mechanism seated on ground for high rigidity
- Pallet dimension 720mm x 400mm
- Pallet exchange time: 15 seconds (incl. air sealing detection time)
- Control panel at right side for easy operation
- Linear scales and 4th axis can be installed



Pallet dimension



Machining range

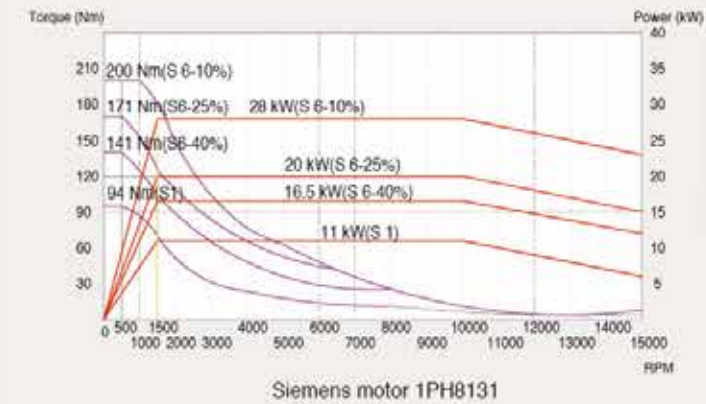


VICTOR Taichung's NC PACKAGE

Heidenhain TNC-620/640 controls

- Powerful dialog programming
- Fully alphanumeric keyboards
- Preview contouring 5000 blocks
- 15" screen
- HR-510 hand wheel

Spindle Output (Heidenhain)

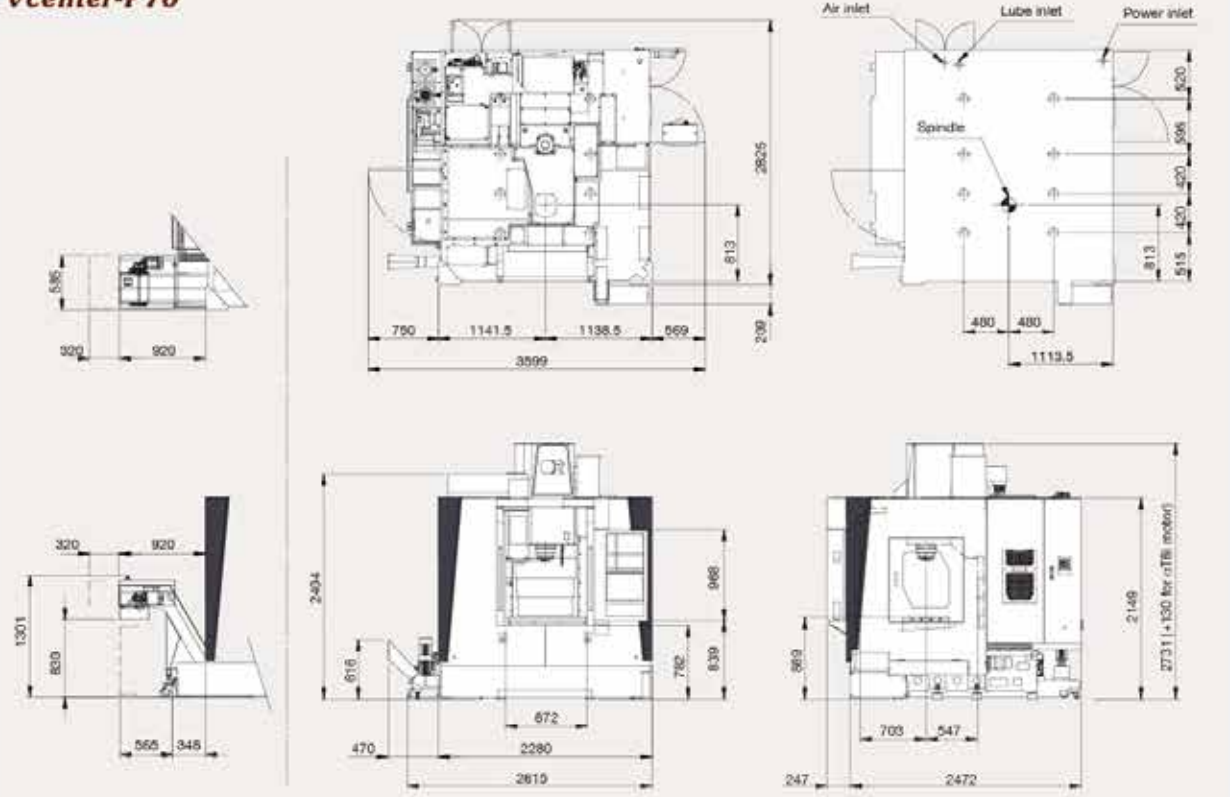


Control features for fast contour milling

Feature \ Controller	FANUC			HEIDENHAIN	
	0i-MF Plus (type 1)	0i-MF Plus (type 0)	31i-B	TNC-620	TNC-640
Block addressing time	1 ms	0.4 ms	0.4 ms	1.5 ms	0.5 ms
Preview contouring (look ahead blocks)	200	200 (Opt. 400)	600 (Opt. 1000 by HSP)	5000	6000
Graphic display	10.4"	15" (Opt. 10.4")	10.4" (Opt. 15")	15"	15" (Opt. 19")
Data storage	5120m (2MB)	5120m (2MB)	2560m (1MB) Opt. 10240m (8MB)	Min. 2GB	Std. 21GB (by SSRD) Opt. 144GB (by HRD)
Memory extension	Std. (CF card, 2GB)	Std. (CF card, 2GB)	Std. (by CF card)	Opt. (by USB)	N.A.
DATA SERVER	Opt. (by CF Card)	Opt. (by CF Card)	Std.	Std.	Std.
Ethernet link	Std.	Std.	Std.	Std.	Std.
Touch panel	N.A.	Incl.	Opt.	Opt.	Opt. (Std. for 19")
Conversational function	Manual guide I (MGI) + VSS macros	Panel iH (iHMI) + MGI + VSS macros	MGI + VSS macros	Std.	Std. + SmartNC
Data transfer interface	PCMCIA + USB	PCMCIA + USB	PCMCIA + USB	USB	USB

Machine Layout

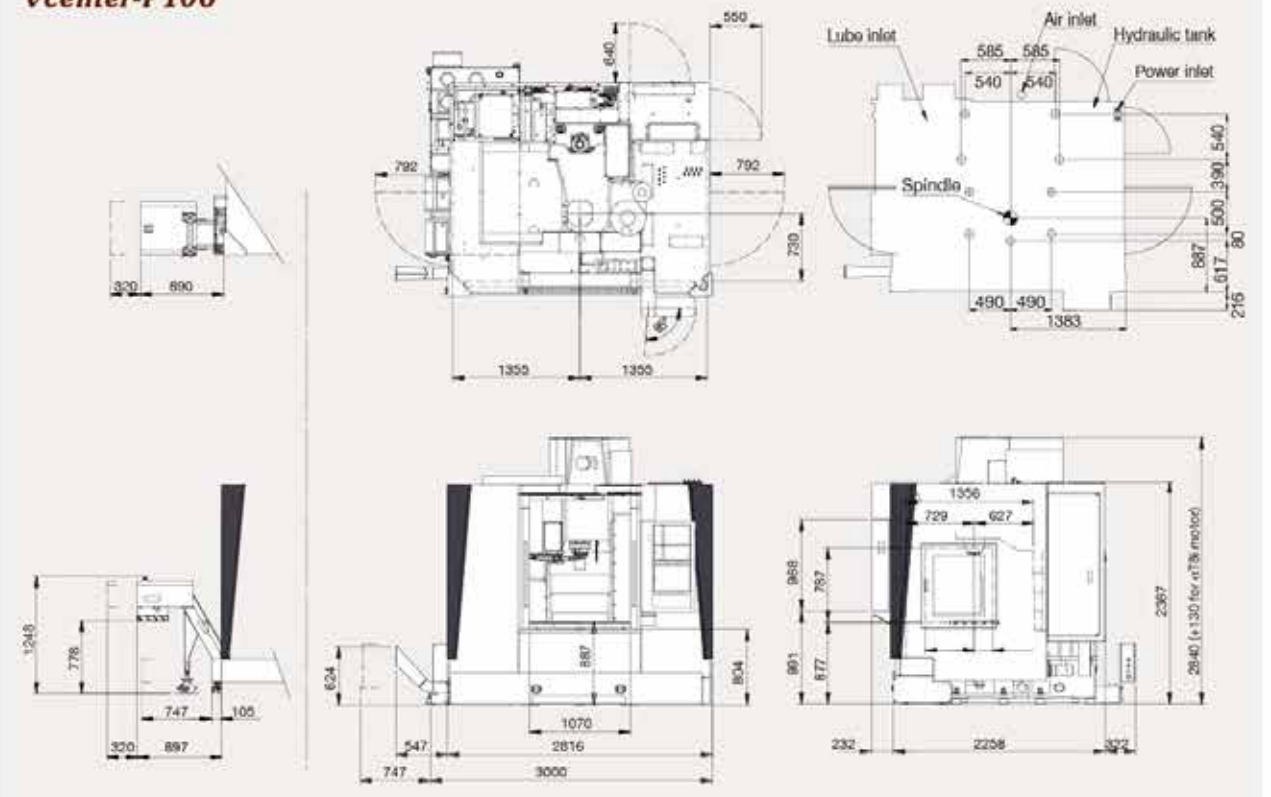
Vcenter-P76



Unit: mm

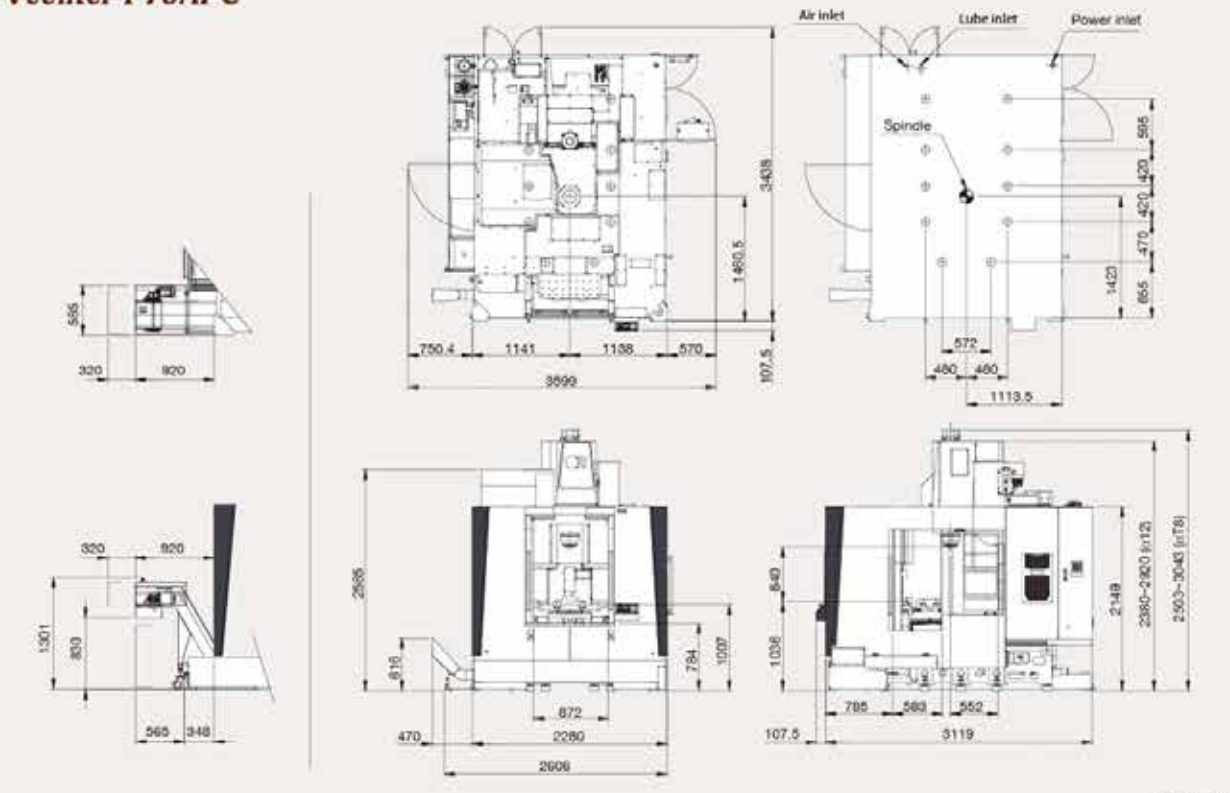
Machine Layout

Vcenter-P106



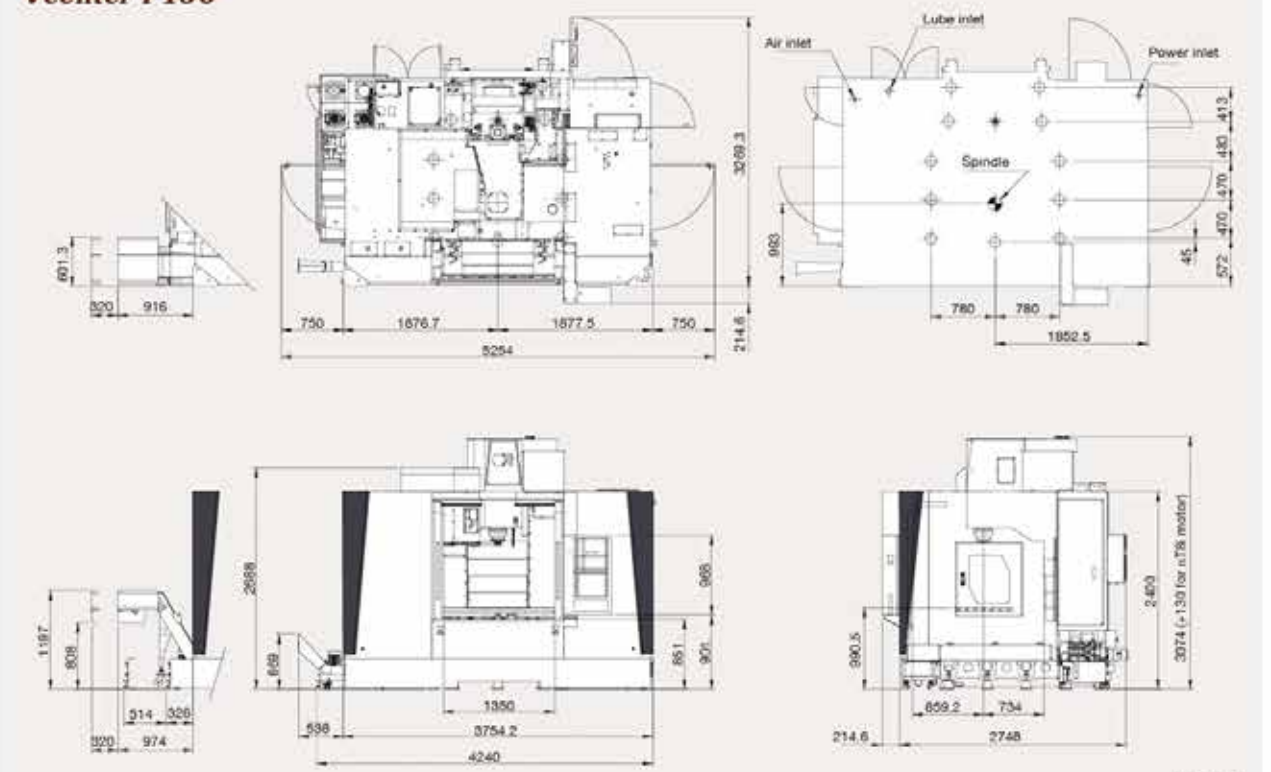
Unit: mm

Vcenter-P76APC



Unit: mm

Vcenter-P136



Unit: mm



R ONWARD RISE

To ensure the return on investment, Victor Taichung has invested considerably in setting up a distribution network in terms of global vision local touch for our sales and service supports worldwide. Besides the qualified exclusive agents around the world, Victor Taichung has 7 overseas subsidiaries to provide our customers efficient after-sales service and technical supports.



Vcenter-P136



R VICTOR TAICHUNG profile:
 Sales turnover: USD 156 mil's (in 2020)*
 No. of employees: 796
 *Exchange rate: 1 USD=28.5 TWD.



THE VICTOR-TAICHUNG COMPANIES



TAIWAN

<http://www.victortaichung.com>
 E-mail: info@mail.or.com.tw

- Victor Taichung Machinery Works Co., Ltd.
 No. 1, Jinglue Central 2nd Rd.,
 Nantun Dist., Taichung 40852,
 TAIWAN, R.O.C.
 TEL : 886-4-23592101
 FAX : 886-4-23593389

FRANCE

- Victor France
 TEL : 33-1-64772000
 FAX : 33-1-64772063

GERMANY

- Victor GmbH
 TEL : 49-2261-478434
 FAX : 49-2261-478327

SOUTH AFRICA

- Victor Fortune (PTY) Ltd.
 TEL : 27-11-3923800
 FAX : 27-11-3923899

MALAYSIA

- Victor Machinery (M) SDN. BHD.
 TEL : 60-3-56337180
 FAX : 60-3-56337191

THAILAND

- Victor (Thailand) Co. Ltd.
 TEL : 66-2-9263735
 FAX : 66-2-9032373

INDONESIA

- PT. Victor Machinery Indonesia
 TEL : +62-21-88958504
 FAX : +62-21-88958513

USA

- Fortune International Inc.
 TEL : 1-732-2140700
 FAX : 1-732-2140701

CHINA

- Victor Taichung Machinery (Shanghai)
 TEL : 86-21-59768018
 FAX : 86-21-59768009



was also marketed under the brand names **VICTOR** (outside North America) and **FORTUNE**

GP1GE2IEO